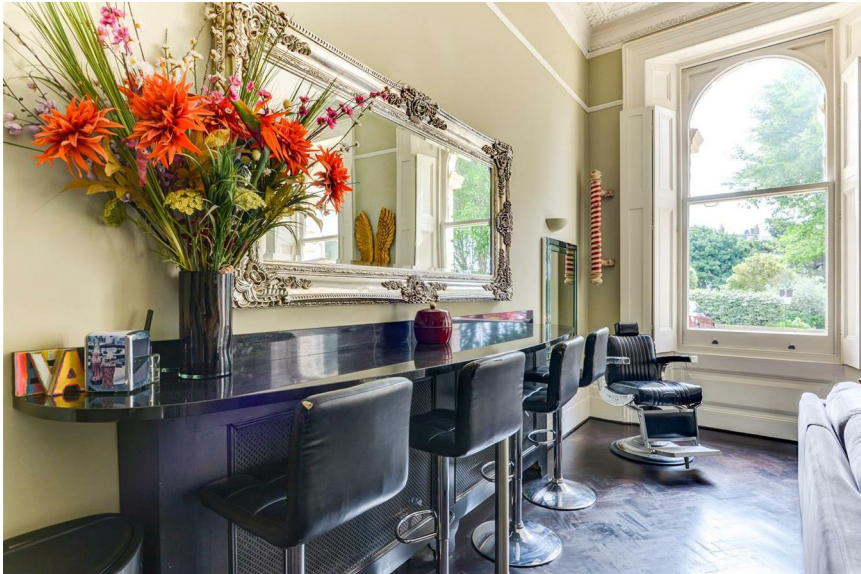
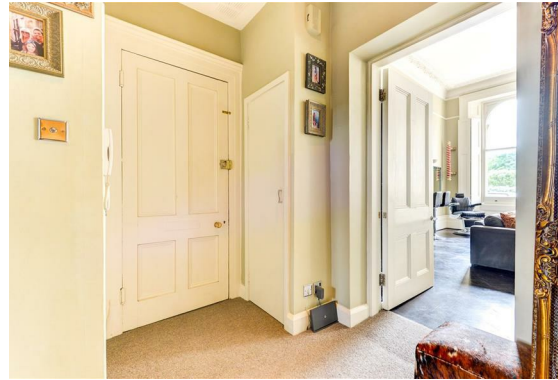


Adelaide Crescent

Hove





We know just the place...



Guide Price £600,000 – £625,000

Lextons are delighted to offer for sale a rarely available raised ground floor mansion apartment in Adelaide Crescent with a stunning open plan living area, which includes a modern kitchen, original period features and an open fireplace. There is also two double bedrooms and a luxury family bathroom.

Adelaide Crescent is arguably one Hove's most prestigious addresses, having been built in the early 1850's as large Regency town houses for the city elites, and now converted to create quality apartment that benefit from the excellent views of Adelaide Crescent gardens and of course, being just a short to Hove Lawns & Seafront.

This stunning apartment occupies part of the raised ground floor of this beautiful building and is superbly presented throughout, having been expertly modernised in recent years, with the signature room to the front having all the original coving and mouldings, as well as a feature open fireplace.

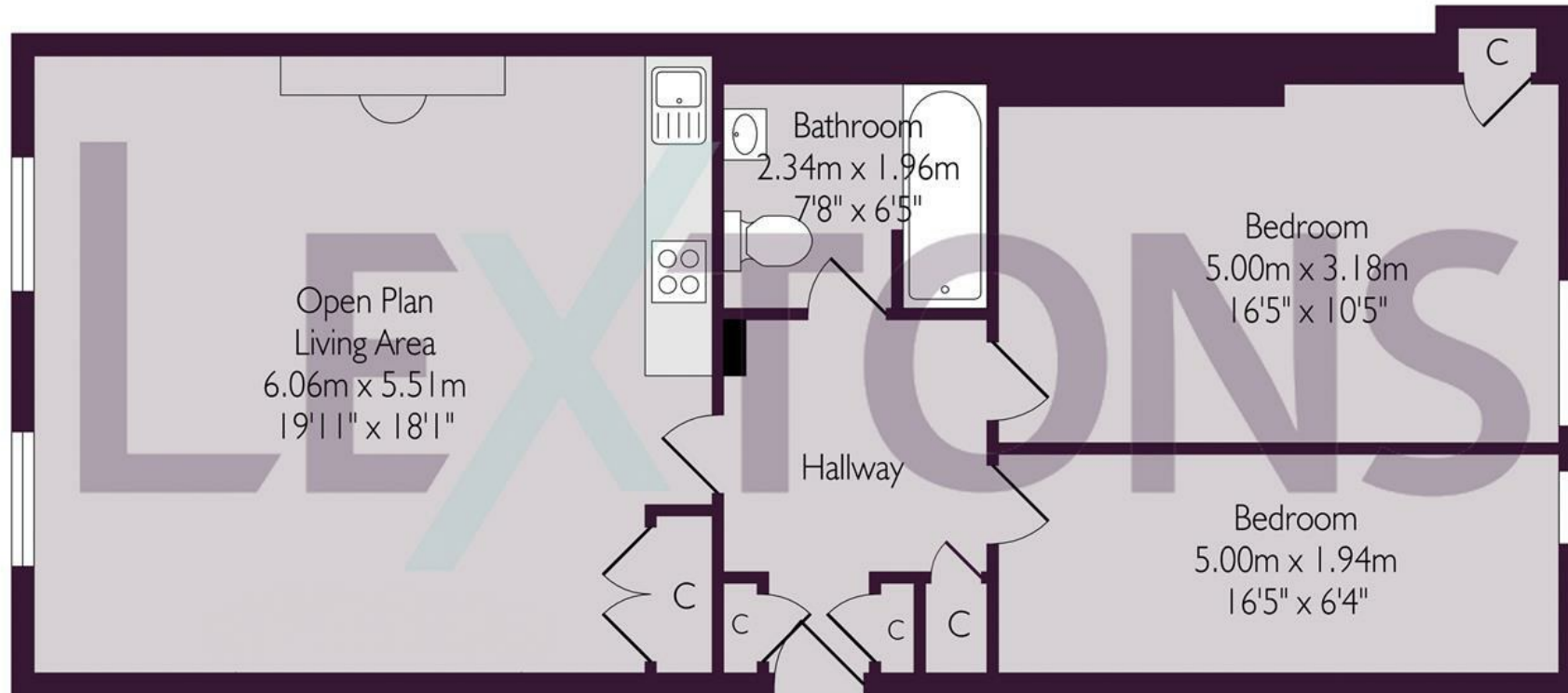
In brief, the accommodation comprises; steps up from street level giving access in the grand communal entrance with the front door to No.1 to the left. Once inside, a good size entrance hall gives access to all rooms, with useful storage cupboards and access to the loft space. The stand-out room without doubt is the open plan living space, which incorporates both the lounge and kitchen area. The kitchen area is excellently fitted with matching modern units, granite work tops and a well placed breakfast bar with space for seating. This room has an abundance of character, including floor to ceiling sash windows, 13ft+ ceiling and all of the original mouldings and decorative feature.

The remainder of the apartment comprises; two double bedrooms with re-claimed sectional radiators to both and a modern family bathroom with a shower over and with quality marble (Travertine) tiled floors and ceilings





Ground Floor



Whilst every care has been taken to ensure accuracy, dimensions are approximate and for illustrative purpose only.

Created for Lextons. All rights reserved

Meet us here...
174 Church Road
Hove
BN3 2DJ

We aim to make our particulars both accurate and reliable. However they are not guaranteed; nor do they form part of an offer or contract. If you require clarification on any points then please contact us, especially if you're traveling some distance to view. Please note that appliances and heating systems have not been tested and therefore no warranties can be given as to their good working order.

